

SKYRISE[®]

Hi-Tech, Low Noise, S.W.R. Drainage System

... A Premium Drainage System for Premium Projects

Supreme, being the renowned leader of India's plastic industry has valuable experience in providing innovative and cost-effective piping solution. Company's objective is to meet the growing needs of its clientele in water, waste management and infrastructure sector through specially developed high performance range of piping products. The innovative product portfolio offered by Supreme is extensive in range and application and comprises a variety of pipes and a vast spectrum of fittings totaling around 7000 diverse products. Together these constitute the most comprehensive range in the industry that caters almost every conceivable need and application.

Considering the pressure on land bank in metropolitan cities as well as tier-I and tier-II cities, we are experiencing a boom of tower constructions. The buildings, as high as 100 stories are coming up in the city of Mumbai. Looking at these trends of vertical growth of cities and premium architectural designs, Supreme has the pleasure to come out with a new "numero-uno" product for the modern construction practices. It is only but natural that the drainage system should be on par with International quality and superiority. Therefore to meet these new challenges, Supreme introduces its latest product, Hi-tech, Low noise S.W.R. Drainage System under the brand name "Skyrise". Skyrise adds one more feather in our cap in our journey towards excellence through quality and innovation.



Jeevan bhar ka saath...

The System

Supreme "Skyrise", Low Noise, S.W.R. drainage system is a premium product especially designed for hotels, hospitals, hi-rise buildings, and premium projects where regular S.W.R. drainage system do not suffice the application requirements. Such buildings require a soil system which is strong enough to withstand site handling and other application requirements. Designed to meet strictest demands for strength and other mechanical properties, this thick walled, high density "Skyrise" Hi-Tech S.W.R. drainage system is additionally featured with low noise aspects. This makes it suitable for the projects where sound beyond certain decibel level is not desirable. Thus a combination of strength and low noise aspect has made this product a much better solution for building drainage. Like our pioneering uPVC S.W.R. drainage system, introduced 25 years ago, which has successfully replaced conventional CI and cement products that were used for building drainage, this an altogether new Hi-Tech soil system will also set a new trend for the new market segment where people are expecting to have such specialty products. It is the best plastic alternative to CI drainage system. As a pioneer in the field it is with great pride and joy we have introduced this new product in the market to elevate present drainage segment.

Features and Benefits

- **Strong and durable**
- **Improved noise insulation**
- **Extensive range of pipes and fittings**
- **Smooth bore- Better flow**
- **Easy and leak proof joints**
- **Light weight compared to CI**
- **Unique design and elegant appearance**
- **Chamfered pipe ends**
- **Corrosion free – longer life beyond 50 year's**
- **Excellent chemical resistance**
- **Good fire resistance properties**
- **Compatible with existing S.W.R. system**
- **Cost effective**

Product specifications and range

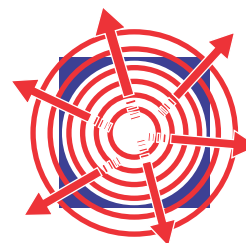
Supreme Skyrise S.W.R. drainage system is made available in 50, 75, 110, 160 and 200 mm sizes in specially designed rubber seal joints besides pasted variety up to 200 mm size. Wall thicknesses of these pipes and fittings are designed to make the product strong, durable and soundproof. This system conforms and exceeds EN 1329 standard requirements.

Raw Material

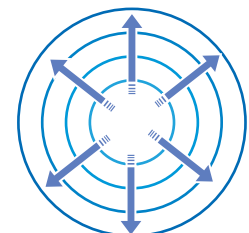
Considering superior properties of PVC like higher modulus of elasticity and high density among the popular thermoplastics, Supreme Skyrise Hi-Tech drainage system is made from mineral reinforced PVC for improved sound insulation.

Improved noise insulation

Use of special compounds having increased molecular weight, extra wall thickness and ribs on the external face of fittings makes the system low on sound and hence the sound level gets substantially reduced. Skyrise noise levels as certified by Fraunhofer Lab, Germany are 22 and 27 decibels corresponding to 2 and 4 lit/sec. respectively.



Conventional Pipes



Skyrise Low Noise Pipes

Fields of application

Skyrise is specially designed for high-rise buildings and premium construction projects like hospitals, luxurious hotels, premium bungalows and apartments where noise insulation along with good mechanical properties is essentially required. Skyrise is an ideal solution for all types of professional wastewater installations.

Pipes



Dimensions of Skyrise Pipes

Size	Tolerance on outside diameter	Wall thickness	
		Minimum	Maximum
50	+ 0.3	3.00	3.20
75	+ 0.3	3.50	3.80
110	+ 0.4	3.80	4.20
160	+ 0.5	4.50	5.00
200	+ 0.6	4.60	5.20

Pipe thicknesses conforms and exceeds EN 1329. Pipe length is 3.0 m inclusive of socket length along with different lengths are made available.

Rubber Ring Type Fittings



Coupler



Bend 87.5°



Bend 87.5° with Door



Bend 45°



Swept Tee



Swept Tee with Door



Reducing Swept Tee



Reducing Swept Tee with door



Single Y



Reducing Y



Eccentric Reducer



Pipe Clamp



Pipe Clamp with Rubber Seal



Pipe Clamp



Metal Clamp with Rubber Seal



Sunken Multi floor Trap



Plain Floor Trap



Height Riser



True Vent

Pasted Type Fittings



Coupler



Bend 87.5°



Bend 87.5° with Door



Bend 45°



Swept Tee



Swept Tee with Door



Reducing Swept Tee



Reducing Swept Tee with door



Single Y



Reducing Y



Eccentric Reducer



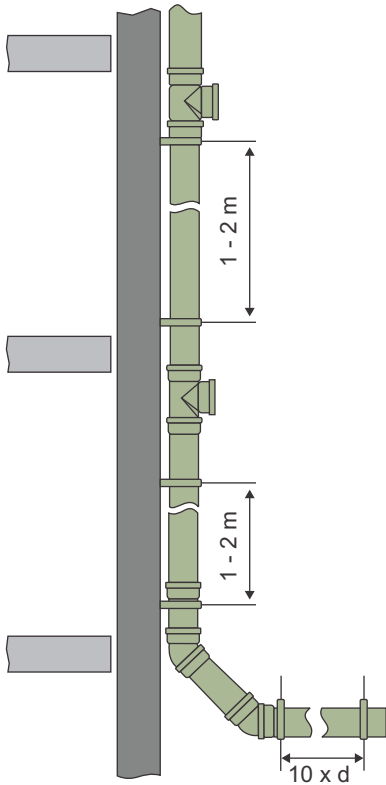
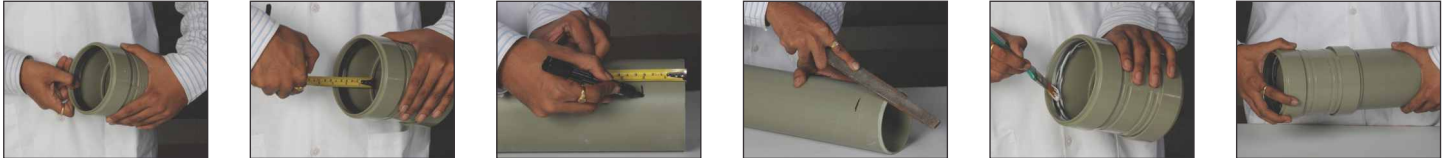
'U' Trap



Vent Cowl with Mesh

Joining Instructions (pipe - socket connections)

1. Clean the socket and gasket, check the condition of the gasket.
2. Clean the ends of both the pipe and fitting to be connected.
3. Apply Silaid lubricant to the ends of the pipe and gasket (do not use grease).
4. Insert the pipe completely into the socket.
5. Withdraw about 10 mm of the pipe (such a space will compensate for expansions) in the case of a fitting, this operation is not necessary. For upright installations, the pipe must be anchored to the wall so that the 10 mm of extracted pipe do not fall back into its previous position, thereby depriving the system of the space necessary to allow for expansion.



Installation Procedure

Installation of Supreme Hi-Tech, Low Noise system has to be done under the supervision of a good technician, paying full attention to the expansion/ contraction process drainage which does not cause any stress on the pipe system. Normal clamps available in the market will do but it is advisable to use the ones with inner rubber lining to minimize the structure born noise transfer.

1. Fixed clamps (clamps with rubber liner) support the system firmly and the loose clamps (clamps without rubber liner) allow the expansion/ contraction of the pipes freely.
2. Clamp interval for horizontal lines should be approx 10 times of the external diameter of pipe.
3. Clamps in the vertical lines should be between 1 – 2 mtrs.
4. Do not install clamps at the point of impact i.e. on the flat places of pressure areas.
5. In the vertical pipes, it is recommended to use one fixed clamp and one loose clamp per length.
6. The fixed clamp must be installed just above the fitting at the bottom end of the vertical pipe line. The sliding clamp has to be installed at the distance of maximum 2 mtrs. from the fixed clamp.
7. In multi- storey buildings (above 3 floors), the vertical line has to be secured against sliding down. Use of a short length of socketed pipe with a fixed clamp under the socket is recommended.

• All the dimensions unless otherwise specified are in mm • All information contained in this literature is given in good faith and believed to be accurate and reliable. But because of many factors which are outside our knowledge and control and affect the use of product, no warranty is given or is to be implied with respect to such information, nor we offer any warranty of immunity against patent infringement. No responsibility can be accepted for any error, omissions or incorrect assumptions. • Any specifications can change without prior notice.

The Supreme Industries Ltd. (Plastic Piping Division)

Corporate Office : 1161/1162, Solitair Corporate Park, Building No. 11,167, Guru Hargovindji Marg, Chakala, Andheri Ghatkopar Link Road, Andheri (East) Mumbai - 400093. India. Tel: 91-22-67710000, 40430000 Fax: 67710099/40430099.
Regd. Office : 612 Raheja Chambers, Nariman Point, Mumbai 400 021. India Tel.: (022) 22851656, 22820072 Fax : (91-22) 22851657
E-mail: pvc-pipes@supreme.co.in **Website :** www.supreme.co.in

Works : • D-101/102, MIDC, Jalgaon - 425 003.

• Unit No.3, Gat No.47-48, at post Gadegaon, Tal. Jamner ,Dist., Jalgaon- 425 114

Export Division : 91-22-6771 0126 / 4043 0126 Fax : 6771 0130

Overseas Office : Sharjah, U.A.E. Tel # + 971 6 557 4484; Fax # + 971 6 557 4485

CIN: L35920MH1942PLC003554

Branch Offices	Tel.	Fax
Ahmedabad	: 079-30028371	27680064
Bangalore	: 080-30913715	22104697
Chennai	: 044-39811181	43850498
Cochin	: 0484-2385346	2385345
Hyderabad	: 040-23261150	23261120
Indore	: 0731-2432684	2432684
Jaipur	: 09910995853	-
Jalgaon Gadegaon	: 0257-3050541, 42	3050611
Kanpur	: 0512-2332276	2332276
Kolkata	: 033-30070123	24858838
Noida (Delhi)	: 0120-6660000	-

Authorised Distributor



I & T SIL Gadegaon, Dist-Jalgaon • PC/SHSWR-MP/MKG/82 • REV.02-12/2016